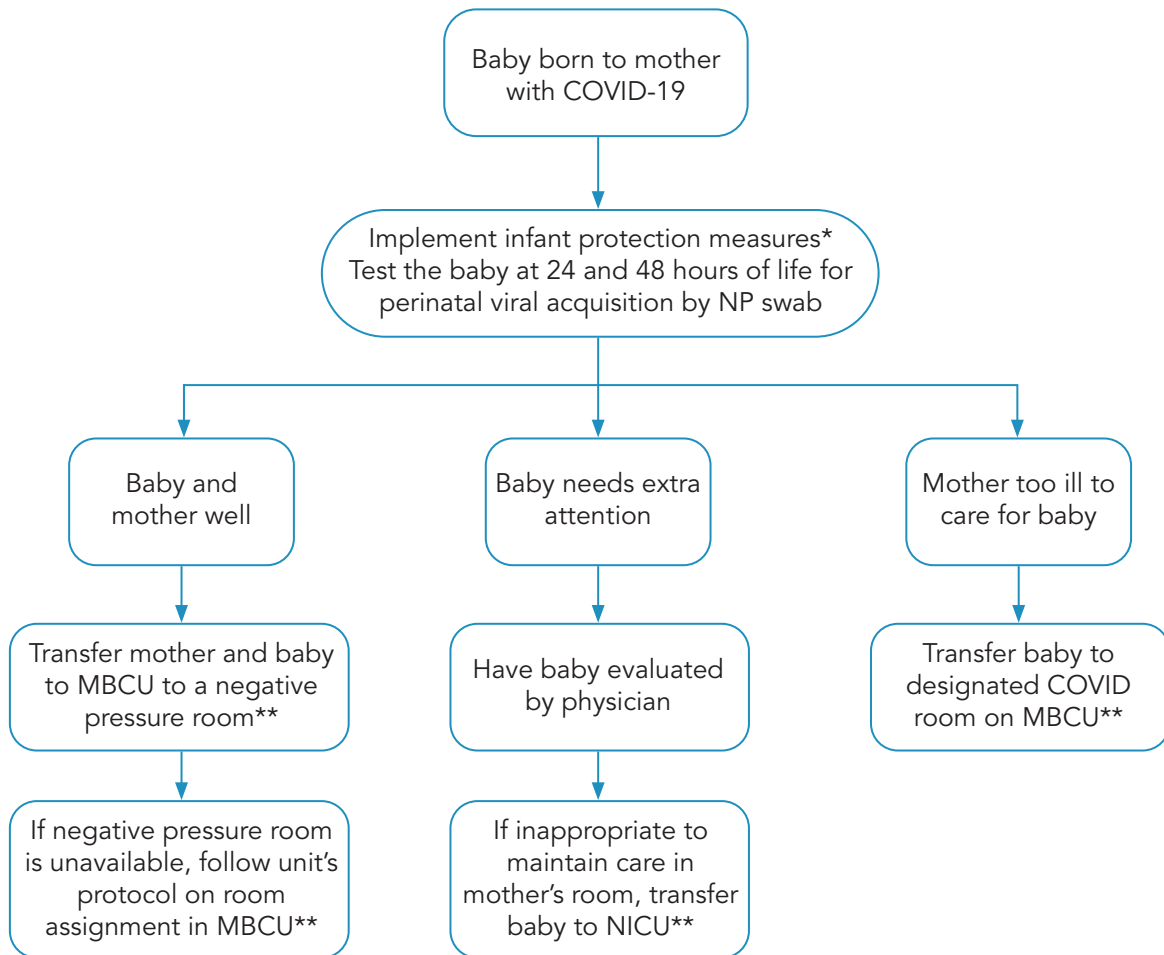


Management of Infant Born to Mother with COVID-19



Hearing screening for baby

Hearing screening will be done as outpatient if baby is rooming in with mother.

*Infant protection measures

1. Mother and all visitors in room wears mask at all times (except when asleep).
2. Perform hand hygiene frequently and always before touching baby.
3. Always put on fresh gloves before touching baby.
4. Keep baby in bassinet as far away as feasible except when breastfeeding.
5. Mother may breastfeed and be skin-to-skin with baby but mother must wear a mask and perform hand hygiene.
6. Bath per usual protocol of the birth center.

**Transfer of baby

All transport of babies from COVID-positive mother including discharge will be done in an isolette.