

# HHP/HPH COVID-19 Community Webinar Series

Thursday, January 14, 2021  
5:30pm – 6:30pm

**HAWAI'I  
PACIFIC  
HEALTH**

HAWAI'I  
HEALTH  
PARTNERS



## Moderator – 01/14/21

### **Andy Lee, MD**

Medical Director, *Hawai'i Health Partners*  
Chief of Staff, *Pali Momi Medical Center*  
Hawai'i Pacific Health

**HAWAI'I  
PACIFIC  
HEALTH**

HAWAI'I  
HEALTH  
PARTNERS

# Disclaimer:

- The following is intended as information resource only for HHP/HPH providers, clinicians, administrative and clinical leaders.
- Specific areas may not pertain directly to your clinical practice area and/or may not be applicable to your practice based on your existing workflows, infrastructure, software (e.g. EHR), and communications processes.

# Webinar Information

- You have been automatically muted. You cannot unmute yourself.
- You will be able to submit questions via the Q&A section.
  - Due to time constraints, any unanswered questions will be addressed this week and posted on the HHP website
- A recording of the meeting will be available tomorrow on the HHP website and intranet.

# How to Claim CME Credit

## 1. Step 1: Confirm your attendance

- You should have completed a brief questionnaire before joining today's live webinar.

## 2. Step 2: HPH CME team will email you instructions

- Complete and submit evaluation survey that will be emailed to you within one week of the offering.
- Your CE certificate will be immediately available to you upon completion of your evaluation.
- Questions? Email [hphcontinuingeduc@hawaiiipacifichealth.org](mailto:hphcontinuingeduc@hawaiiipacifichealth.org)

# CME Accreditation Statement

- In support of improving patient care, Hawai'i Pacific Health is jointly accredited by the Accreditation Council for Continuing Medical Education (ACCME), the Accreditation Council for Pharmacy Education (ACPE), and the American Nurses Credentialing Center (ANCC), to provide continuing education for the healthcare team.
- Hawai'i Pacific Health designates this webinar activity for a maximum of 1.0 AMA PRA Category 1 Credit (s) <sup>TM</sup> for physicians. This activity is assigned 1.0 contact hour for attendance at the entire CE session.



JOINTLY ACCREDITED PROVIDER <sup>TM</sup>  
INTERPROFESSIONAL CONTINUING EDUCATION

# Disclosures

- The planners and presenters of this activity report no relationships with companies whose products or services (may) pertain to the subject matter of this meeting



# COVID-19 Vaccination: Rollout

**Melinda Ashton, MD**

Executive Vice President and Chief Quality Officer  
Hawai'i Pacific Health

**HAWAI'I  
PACIFIC  
HEALTH**

HAWAI'I  
HEALTH  
PARTNERS

# Phases

- Phase 1 a:
  - Long-term care facilities: CVS and Walgreens (Moderna)
  - Hospitals: Pfizer
    - Easiest to reach employees and others at clinical care sites, then affiliated, then non affiliated (managed by HDOH and HAH)
  - First responders
- Phase 1 b: 75+ and critical staff in essential worker roles
- Phase 1c: 65+, under 65 with comorbid conditons

# Pfizer vaccine

- 2 trays received 12/16/20
  - 975 doses in each
  - Gave 2230 shots in 2 ½ days

Since then, have given ~10,000 doses across HPH

# As of 1/11/21

	Doses on hand at start of week	Expected doses	Expect to administer this week	Expect to administer next week
<b>KMCWC</b>	<b>4842</b>	<b>2340</b>	<b>1440</b>	<b>9120</b>
<b>PMMC</b>	<b>2526</b>	<b>2340</b>	<b>864</b>	<b>864</b>
<b>SMC</b>	<b>2862</b>	<b>2340</b>	<b>288</b>	<b>864</b>
<b>WMC</b>	<b>1392</b>	<b>1170</b>	<b>648</b>	<b>1272</b>
<b>HPH Total</b>	<b>11622</b>	<b>8190</b>	<b>3240</b>	<b>12120</b>

# Pier 2 Vaccination Site

- In collaboration with HDOH
- Vaccine supply dependent (Pfizer now, perhaps Moderna soon)
- Community vaccinations starting 1/18/21
- Monday to Saturday, by appointment
  - Finish Phase 1a, non affiliated
  - First responders
  - 75+ (with allowance to vaccinate an escort)
- Plan to continue through March, 20021

# Pier 2

- # appointments completed so far: 0
- # appointments scheduled: 8,045
- # appointment slots left to schedule: 5,203

# Information to sign up

- To begin the process, adults ages 75 and older can complete the online appointment request form at <http://hawaiipacifichealth.org/CovidVaccine>.
- Instructions to schedule your vaccine appointment will be sent via email or a representative will follow up to schedule your appointment

# HPH TO BEGIN O'AHU COVID-19 VACCINE CENTER FOR ADULTS OVER 75

- The HPH COVID-19 Vaccination Center located at Pier 2 – Cruise Terminal (521 Ala Moana Boulevard) will be open as follows:
  - Monday through Saturday, beginning on Jan. 18, 2021
- **Vaccinations are available by appointment only. Walk-ins will not be accepted.**

# MyChart

- Patients who have a MyChart® by Hawai'i Pacific Health account, who qualify for vaccine by age, will be sent a notification through MyChart where they can sign up for an appointment
- If your patients do not already have an MyChart® account, please encourage them to create one online at [MyChart.HawaiiPacificHealth.org](https://MyChart.HawaiiPacificHealth.org), as it will be the easiest way to schedule an appointment

From: [donotreply@hawaiiapacifichealth.org](mailto:donotreply@hawaiiapacifichealth.org) <[donotreply@hawaiiapacifichealth.org](mailto:donotreply@hawaiiapacifichealth.org)>

Sent: Monday, January 11, 2021 8:42 PM

Subject: You have an appointment that needs to be scheduled in MyChart

## MyChart

by Hawai'i Pacific Health

Hello

You have an appointment that needs to be scheduled in MyChart! Please sign in to schedule the appointment.

Thank you for using MyChart by Hawai'i Pacific Health!

This is a system generated message; please do not reply to this email.



[Sign In to MyChart](#)

MyChart is available on the go!



To change what notifications you receive and how you receive them



Health



Visits



Messaging



Billing



Resources



Profile

Log Out

Welcome!



Click here to schedule an appointment for the COVID-19 Vaccine.



Learn more about the COVID-19 Vaccine.



Learn more about how to prevent the spread of respiratory illnesses like COVID-19



Schedule a COVID-19 testing appointment if you have an order from your physician



Partner with us on your healthcare



Read your messages. You have 7 new messages.



Schedule appointments for your current health reminders. 2 reminders need your attention.



View your 4 new statements for account # 123456789



Save time while you save paper! Sign up for paperless billing (available for Hawaii Pacific Health accounts only).

## Quick Links



View test results



Refill medications



Ask a question



Schedule an appointment



Review health summary



View billing summary



Get an estimate



Share your record

Care Team



Health



Visits



Messaging



Billing



Resources



Profile

Log Out

## Schedule an Appointment

If you have a medical emergency, please call 911 or go to the nearest emergency department.

### COVID-19 Alert

In an effort to ensure everyone's health and safety during the pandemic, we ask that you please schedule a telephone or video visit or contact your primary care physician's office for guidance before scheduling an in person visit if you have any COVID-19 symptoms including fever, cough, sore throat, shortness of breath, and flu-like illness or had a possible COVID-19 exposure.

Patients who have an established primary care provider may be able to find appropriate care based on their non-urgent symptoms by using the E-visit tool. If you do not have a primary care provider, please call us at 808-643-4632 to schedule an appointment.

E-VISIT

## Appointments you need to schedule

COVID-19 VACCINE 1ST DOSE APPT

Schedule before 1/11/2022

SCHEDULE NOW

We removed the provider name from here.

## Attention

You are now able to schedule an appointment with your Primary Care Physician using MyChart.

When scheduling an appointment, you will be asked to provide a reason for your visit and will also have the option of choosing an in-office, video or phone appointment as appropriate. Your doctor's office will review the appointment and may reach out to you to gather more information.

## Related Links



Find a new provider



E-Visit

## Schedule an Appointment

[START OVER](#)

If you have a medical emergency, please call 911 or go to the nearest emergency department.



Reason for visit  
COVID-19  
VACCINE 1ST  
DOSE APPT



Questions



Locations



Providers



Time



Verify and  
schedule

### A couple of questions

\* Indicates a required field.

\* Will someone be accompanying the person being vaccinated?

Yes

No

\* Would this person also like to be vaccinated?

Yes

No

Please provide this person's full name, date of birth, phone number, address, and email address.

Mango Ambtest, 1/1/1995, 808-555-1212, 888 S King St, Hon

198 of 255 characters remaining

CONTINUE



Health



Visits



Messaging



Billing



Resources



Profile

Log Out

## Schedule an Appointment

If you have a medical emergency, please call 911 or go to the nearest emergency department.

START OVER



Reason for visit

COVID-19 VACCINE  
1ST DOSE APPT



Locations [Edit](#)

Straub Clinic and  
Hospital



Providers [Edit](#)

Pier\_2\_Cruise\_Termi  
nal Covid Vaccination  
Smc



Time



Verify and schedule

### What time works for you?

Start search on

01/11/2021



Times

All available times

Filter times

Tuesday January 12, 2021

Click a time

7:00 AM	7:05 AM	7:10 AM	7:15 AM	7:20 AM
7:25 AM	7:30 AM	7:35 AM	7:40 AM	7:45 AM
7:50 AM	7:55 AM	8:00 AM	8:10 AM	8:15 AM
8:20 AM	8:25 AM	8:30 AM	8:35 AM	8:40 AM
8:45 AM	8:50 AM	8:55 AM	9:00 AM	9:05 AM

### Attention

You are now able to schedule an appointment with your Primary Care Physician using MyChart.

When scheduling an appointment, you will be asked to provide a reason for your visit and will also have the option of choosing an in-office, video or phone appointment as appropriate. Your doctor's office will review the appointment and may reach out to you to gather more information.

### Related Links



Find a new provider



E-Visit



Health



Visits



Messaging



Billing



Resources



Profile

Log Out

## Schedule an Appointment

If you have a medical emergency, please call 911 or go to the nearest emergency department.

START OVER



Reason for visit  
COVID-19 VACCINE  
1ST DOSE APPT



Locations [Edit](#)  
Straub Clinic and  
Hospital



Providers [Edit](#)  
Pier\_2\_Cruise\_Termi  
nal Covid Vaccination  
Smc



Time [Edit](#)  
Tuesday January 12,  
2021 7:05 AM



Verify and schedule

## Verify your personal information

### Contact Information

PO Box 3  
Honolulu, 96813

Going somewhere for a while?  
[Add a Temporary Address](#)



808-535-7000  
808-535-7001  
(preferred)



Not entered



patient@gmail.com

EDIT



### Details About Me

Preferred Name

Religion  
No Denomination



EDIT

THIS INFORMATION IS CORRECT

## Attention

You are now able to schedule an appointment with your Primary Care Physician using MyChart.

When scheduling an appointment, you will be asked to provide a reason for your visit and will also have the option of choosing an in-office, video or phone appointment as appropriate. Your doctor's office will review the appointment and may reach out to you to gather more information.

## Related Links



Find a new provider



E-Visit

## Schedule an Appointment

If you have a medical emergency, please call 911 or go to the nearest emergency department.

START OVER

-  Reason for visit  
COVID-19 VACCINE  
1ST DOSE APPT
-  Locations [Edit](#)  
Straub Clinic and  
Hospital
-  Providers [Edit](#)  
Pier\_2\_Cruise\_Termi  
nal Covid Vaccination  
Smc
-  Time [Edit](#)  
Tuesday January 12,  
2021 7:05 AM
-  [Verify and schedule](#)

### Verify your insurance

#### Responsibility for Payment

\*Would you like to use insurance to pay for this appointment? ⓘ

Use insurance

Do not bill insurance

#### Insurance on File

Aetna Medicare Esa Ppo  
Aetna Medicare Esa Ppo

Subscriber Name  
Patient  
Subscriber  
Number  
R12345678912

 ADD INSURANCE CARD PHOTOS

Uploading images of your card now will help  
speed up the check-in process for your next  
visit.

+ ADD A COVERAGE

 Update coverage

 Remove coverage

THIS INFORMATION IS CORRECT

### Attention

You are now able to schedule an appointment with your Primary Care Physician using MyChart.

When scheduling an appointment, you will be asked to provide a reason for your visit and will also have the option of choosing an in-office, video or phone appointment as appropriate. Your doctor's office will review the appointment and may reach out to you to gather more information.

### Related Links



Find a new provider



E-Visit

## Schedule an Appointment

If you have a medical emergency, please call 911 or go to the nearest emergency department.

START OVER



Reason for visit  
COVID-19 VACCINE  
1ST DOSE APPT



Locations [Edit](#)  
Straub Clinic and  
Hospital



Providers [Edit](#)  
Pier\_2\_Cruise\_Termi  
nal Covid Vaccination  
Smc



Time [Edit](#)  
Tuesday January 12,  
2021 7:05 AM



Verify and schedule

Is everything correct?

**COVID-19 VACCINE 1ST DOSE APPT  
with Pier\_2\_Cruise\_Terminal Covid  
Vaccination Smc**



Tuesday January 12, 2021  
7:05 AM (5 minutes)



Vaccination Clinic - Pier 2 Cruise  
Terminal  
521 Ala Moana Blvd  
HONOLULU HI 96813-3009

\*What is the most important thing you want addressed during this visit?

Vaccination

489 of 500 characters remaining

SCHEDULE

## Attention

You are now able to schedule an appointment with your Primary Care Physician using MyChart.

When scheduling an appointment, you will be asked to provide a reason for your visit and will also have the option of choosing an in-office, video or phone appointment as appropriate. Your doctor's office will review the appointment and may reach out to you to gather more information.

## Related Links



Find a new provider



E-Visit

## Appointment Details



### Appointment Scheduled

You're all set! You can review details of your upcoming appointment below.



### Covid-19 Initial Vaccine with Pier\_2\_Cruise\_Terminal

Tuesday January 12, 2021

7:05 AM HST (5 minutes)

[Add to Calendar](#)

Vaccination Clinic - Pier 2 Cruise  
Terminal

521 Ala Moana Blvd  
HONOLULU HI 96813-3009

[Reschedule Appointment](#)

[Cancel Appointment](#)

### Get ready for your visit!

**CONFIRM**

Let staff know you don't need a reminder call.

**ECHECK-IN**

Save time by completing eCheck-In ahead of  
time.

[BACK TO VISITS LIST PAGE](#)

< January 2021 >

S	M	T	W	T	F	S
					1	2
3	4	5	6	7	8	9
10	11	12	13	14	15	16
17	18	19	20	21	22	23
24	25	26	27	28	29	30
31						

## Appointments and Visits

SCHEDULE AN APPOINTMENT

[Click here](#) to learn how to get the most out of your notes and to also learn about Information Sharing.

Show: Upcoming and Past [More Filter Options](#)

## Upcoming Visits

Next 7 Days

JAN  
12  
Tue

Covid-19 Initial Vaccine with Pier\_2\_Cruise\_Terminal  
⌚ Starts at 7:05 AM HST (5 minutes)



ECHECK-IN

DETAILS

Reschedule Appointment

Cancel Appointment

Vaccination Clinic - Pier 2 Cruise Terminal  
521 Ala Moana Blvd  
HONOLULU HI 96813-3009



< January 2021 >

S M T W T F S

1 2

3 4 5 6 7 8 9

10 11 12 13 14 15 16

17 18 19 20 21 22 23

24 25 26 27 28 29 30

31

## Related Links

Document Center

After the appointment is scheduled, an email message will be sent to the patient. ***This MyChart message will contain confirmation of the appointment.***

# Clinic Users: Hyperspace View

The screenshot displays the Epic Hyperspace Appointment Desk interface. The top navigation bar includes tabs for Schedule, In Basket, Chart, Hospital Chart, Patient Lists, Encounter, Telephone Call, Record Viewer, Epic Help, and Secure. The main content area is titled 'Appointment Desk' and features a sidebar on the left with navigation icons and a 'Patient Summary (Edit)' section. The 'Patient Summary' section displays fields for DOB, SSN, Legal Name, Registration Status (ELP), Preferred Language (English), Needs Interpreter?, Mobile, Home, Work, and E-mail. Below this is the 'Guarantor Accounts' section, which shows a table of accounts with columns for Account Name, Account Ver Status, Account #, Serv Area, Type, Fin Class, Balance, and Account Status. The 'Future' tab is selected, showing a list of appointments with columns for Encounter Date, Arrive By, Time, Len, Dept, Provider, Visit Type, Refr Notes, HAR, Confidential En Status, and Auth Status. The first appointment is for a COVID-19 vaccine on 1/12/2021 at 7:05 AM.

**Appointment Desk**

Make Appt One Click Walk In Schedule Request Reports Patient Options Printing

**Patient Summary (Edit)**

DOB	Registration Status	Mobile	E-mail
SSN	ELP	Home	<a href="#">Preventive Care</a>
Legal Name	Preferred Language	Work	
	English		
	Needs Interpreter?		

**Guarantor Accounts**

Account Name	Acct Ver Status	Acct #	Serv Area	Type	Fin Class	Balance	Acct Status
Payor/Plan	Elapsed	Subscriber	HPHSA	P/F	CARE	0.00	
	Cvg Ver Status						
	Elapsed						

**Future** Past Finalized Requests Referrals

Encounter Date	Arrive By	Time	Len	Dept	Provider	Visit Type	Refr Notes	HAR	Confidential En Status	Auth Status
1/12/2021 Tue	7:05 AM	7:05 A	5	VACSK [15002034]	COVID VACCINATION SMC, PIER_2_CRUISE_TERM MYCHART [1001416]	COVID-19 VACCINE	Vaccination		Sch	✓

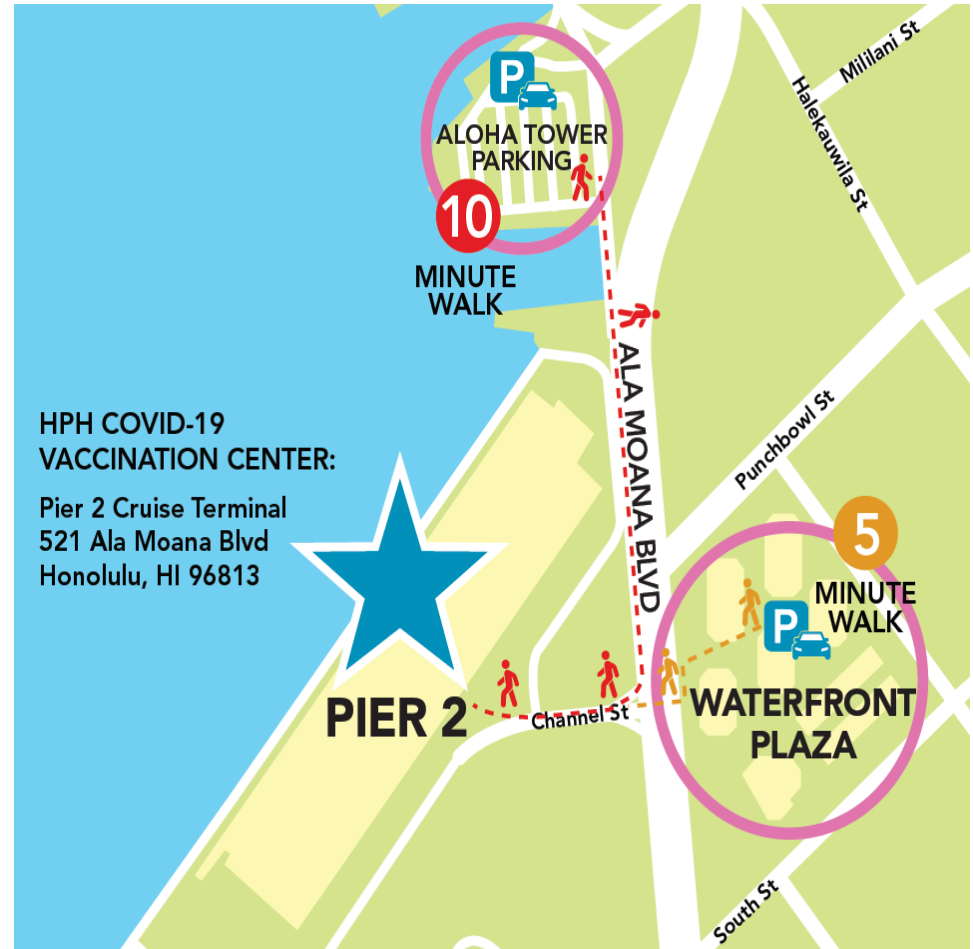
**COVERAGE & FINANCIAL INFO**  
 AETNA MEDICARE ESA  
 PPO/AETNA MEDICARE ESA PPO  
 Guarantor: P/F - Self  
 HB Self-Pay: \$0.00  
 PB Self-Pay: \$0.00  
 Total Self-Pay: \$0.00

**NO SHOWS**  
 0% All departments

**NEXT APPOINTMENT**  
 1/12 COVID-19 VACCINE MYCHART  
 7:05 AM (Tomorrow)  
 VACCINATION - SCKNG

# FAQ: Parking

- Parking for the vaccine clinic is available at two locations:
  - Waterfront Plaza
  - Aloha Tower Market Place
- The special parking rate for both locations is \$2 for 2 hours with documentation of your vaccine clinic visit
- Pier 2 parking is limited and reserved for persons with restricted mobility. Pier 2 parking is \$5



# FAQ: Can I bring someone with me to the appointment?

- You can have one escort accompany you to the appointment, but please be advised that no one under the age of 18 will be allowed inside the clinic. For those who are 75 years or older, the Department of Health plan allows an escort to also receive the vaccination at the same visit. If you intend to bring an escort, you will need to indicate that when you make your appointment and your escort will also need an appointment.

# FAQ: How early should I arrive for my appointment?

- For patients with appointments at the **O‘ahu COVID-19 Vaccination Center at Pier 2**, please arrive no earlier than 30 minutes prior
- For patients scheduled for appointments at **Wilcox Medical Center or Kaua‘i Medical Clinic**, please arrive no earlier than 15 minutes before your scheduled appointment.
- Patients who arrive too early will be asked to come back closer to their appointment time.

# FAQ: How long will the vaccination take?

- For your safety and well-being, you will be monitored for any side effects by medical personnel for a minimum of 15 minutes after receiving the COVID-19 vaccine. At that time, you will also be given a questionnaire to fill out with contact information.
- Before you leave, you will also be asked to schedule your appointment for your second dose 21 days later.

## FAQ: What do we tell our HPH patients who are *75 and over*?

- We encourage patients 75 and older who previously have been seen at a Hawaii Pacific Health clinic or hospital to sign-up for or activate their Hawaii Pacific Health MyChart account as it will be the easiest way to be notified when it is their turn to schedule vaccination appointments
- Please note it will need to be a Hawaii Pacific Health MyChart account as MyChart accounts created at other health care organizations are separate from this effort

## FAQ: What do we tell our HPH patients who are *under age 75*?

- As additional vaccine doses are received in the coming weeks and months, it will become available to more people based on the designated priority groups. Although we don't have control over the prioritization, please be assured that we will work to provide more information to our patients as quickly as we are able to
- We encourage patients who previously have been seen at a Hawaii Pacific Health clinic or hospital to sign-up for or activate their Hawaii Pacific Health MyChart account as it will be the easiest way to be notified when it is your turn to schedule vaccination appointments, based on the Hawai'i State Department of Health's vaccine timeline

# FAQ: What do we tell people who are not patients of HPH regardless of age?

- Anyone fitting into this group should contact Hawai'i Department of Health.
- The Hawai'i Department of Health (HDOH) has provided a website that has COVID-19 vaccine information, FAQs, a call center, and an email address for the public to get answers to questions about the vaccine.
  - The website is [hawaiiicovid19.com](https://hawaiiicovid19.com)
  - The email address is [doh.imb.vaxcc@doh.hawaii.gov](mailto:doh.imb.vaxcc@doh.hawaii.gov)
  - The call center phone number is 808-586-8332
    - The staff is available on Monday – Friday, 7:45 a.m. to 4:30 p.m.

- For more information about the state's COVID-19 Vaccination Plan and the vaccination timeline for priority groups, visit [HawaiiCOVID19.com/Vaccine](https://HawaiiCOVID19.com/Vaccine)



# COVID-19 Vaccination: Adverse Reactions and Who Shouldn't Get Vaccinated

**Douglas Kwock, MD**

Vice President, Medical Staff Affairs  
Hawai'i Pacific Health

**HAWAI'I  
PACIFIC  
HEALTH**

HAWAI'I  
HEALTH  
PARTNERS

# Current COVID-19 Vaccines

- **Pfizer-BioNTech:**
  - Ages  $\geq 16$  years of age
  - 21 days apart
- **Moderna:**
  - Ages  $\geq 18$  years of age
  - 28 days apart
- **Both vaccines:**
  - mRNA vaccines
  - Two shot series
  - 94%-95% effective after second dose
  - Similar safety profiles

# Current COVID-19 Vaccines

- ACIP does not give preference to one or the other vaccine
- The 2 vaccines are not interchangeable



similar



# Study Reactions: Local

- Pain at injection site, swelling, redness, axillary swelling or tenderness
- Common (~ 85%) reported at least one reaction
  - Similar with first and second dose
- Onset within 1 day
- Duration 2 to 3 days

# Study Reactions: Systemic

- Fatigue, headache, myalgia, arthralgia, fever, nausea/vomiting, chills, diarrhea
- Common (~ 75%)
  - More common with second dose
  - More common in younger individuals
- Onset within 1 to 3 days
- Duration 1 to 3 days
- Mounting a good immune response

# Study Adverse Events

- **Serious**
  - Death, was life-threatening, required hospitalization, prolongation of existing hospitalization, or resulted in disability or incapacity
  - Rare (0.5%-1%)
    - Appendicitis, myocardial infarction, cerebral vascular accident
  - Similar rate between vaccine and placebo
- **Other**
  - Bell's palsy

# Anaphylaxis

- Post-authorization events
  - 29 reported cases in US
  - Rate of 5.5 cases per million vaccine doses
- Vaccine components
  - mRNA
  - Lipids: polyethelene glycol, cholesterol
  - Salts, Sugars, Buffers: Sodium, potassium, sucrose, tromethamine (Moderna)

	MAY PROCEED WITH VACCINATION	PRECAUTION TO VACCINATION	CONTRAINDICATION TO VACCINATION
CONDITIONS	<b>CONDITIONS</b> <ul style="list-style-type: none"> <li>Immunocompromising conditions</li> <li>Pregnancy</li> <li>Lactation</li> </ul> <b>ACTIONS</b> <ul style="list-style-type: none"> <li>Additional information provided*</li> <li>15 minute observation period</li> </ul>	<b>CONDITIONS</b> <ul style="list-style-type: none"> <li>Moderate/severe acute illness</li> </ul> <b>ACTIONS</b> <ul style="list-style-type: none"> <li>Risk assessment</li> <li>Potential deferral of vaccination</li> <li>15-minute observation period if vaccinated</li> </ul>	<b>CONDITIONS</b> <ul style="list-style-type: none"> <li>None</li> </ul> <b>ACTIONS</b> <ul style="list-style-type: none"> <li>N/A</li> </ul>
ALLERGIES	<b>ALLERGIES</b> History of allergies that are unrelated to components of an mRNA COVID-19 vaccine†, other vaccines, injectable therapies, or polysorbate, such as: <ul style="list-style-type: none"> <li>Allergy to oral medications (including the oral equivalent of an injectable medication)</li> <li>History of food, pet, insect, venom, environmental, latex, etc., allergies</li> <li>Family history of allergies</li> </ul> <b>ACTIONS</b> <ul style="list-style-type: none"> <li>30-minute observation period: Persons with a history of anaphylaxis (due to any cause)</li> <li>15-minute observation period: All other persons</li> </ul>	<b>ALLERGIES</b> <ul style="list-style-type: none"> <li>History of any immediate allergic reaction‡ to vaccines or injectable therapies (except those related to component of mRNA COVID-19 vaccines† or polysorbate, as these are contraindicated)</li> </ul> <b>ACTIONS:</b> <ul style="list-style-type: none"> <li>Risk assessment</li> <li>Consider deferral of vaccination and/or referral to allergist-immunologist</li> <li>30-minute observation period if vaccinated</li> </ul>	<b>ALLERGIES</b> History of the following are contraindications to receiving either of the mRNA COVID-19 vaccines†: <ul style="list-style-type: none"> <li>Severe allergic reaction (e.g., anaphylaxis) after a previous dose of an mRNA COVID-19 vaccine or any of its components</li> <li>Immediate allergic reaction‡ of any severity to a previous dose of an mRNA COVID-19 vaccine or any of its components^ (including polyethylene glycol)^#</li> <li>Immediate allergic reaction of any severity to polysorbate^#</li> </ul> <b>ACTIONS</b> <ul style="list-style-type: none"> <li>Do not vaccinate#</li> <li>Consider referral to allergist-immunologist</li> </ul>

<https://www.cdc.gov/vaccines/covid-19/info-by-product/clinical-considerations.html>

# Other Considerations

- mRNA COVID-19 vaccines are not interchangeable
- COVID-19 vaccine series should be administered alone
  - Minimum 14 day interval before or after administration of other vaccines
- History of prior SARS-CoV-2 infection (symptomatic or asymptomatic)
  - Yes, offer vaccine
  - No indication for SARS-CoV-2 testing prior to vaccination
  - May delay vaccination for 90 days after infection

# Other Considerations

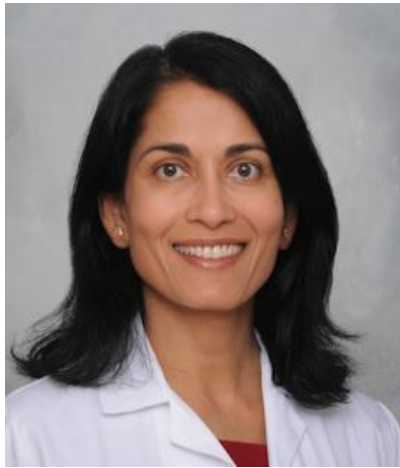
- Recent history of passive antibody therapy
  - Defer vaccination for at least 90 days after antibody therapy
- Current SARS-CoV-2 infection
  - Defer vaccination until after recovery from infection and after they are cleared from transmission risk
- Recent SARS-CoV-2 exposure
  - Defer vaccination until quarantine period has ended

# Vaccine Event Reporting

- Required reporting
  - Vaccine administration errors
  - Serious adverse events
  - Cases of Multisystem Inflammatory Syndrome
  - Cases of COVID-19 that result in hospitalization or death
- Any clinically significant adverse event even if uncertain whether vaccine caused the event
- Reporting mechanisms
  - VAERS: <https://vaers.hhs.gov>, 1-800-822-7967
  - V-Safe: CDC downloadable smartphone app

# Information Resource

- CDC: Interim Clinical Considerations for Use of mRNA COVID-19 Vaccines Currently Authorized in the United States (last updated January 6, 2021)
  - <https://www.cdc.gov/vaccines/covid-19/info-by-product/clinical-considerations.html>



# COVID-19 Vaccination: Return to Work - Post Vaccination

**Shilpa Patel, MD**

*Pediatric Hospitalist, Kapi'olani Medical Center*

*Physician Liaison, Quality & Patient Safety*

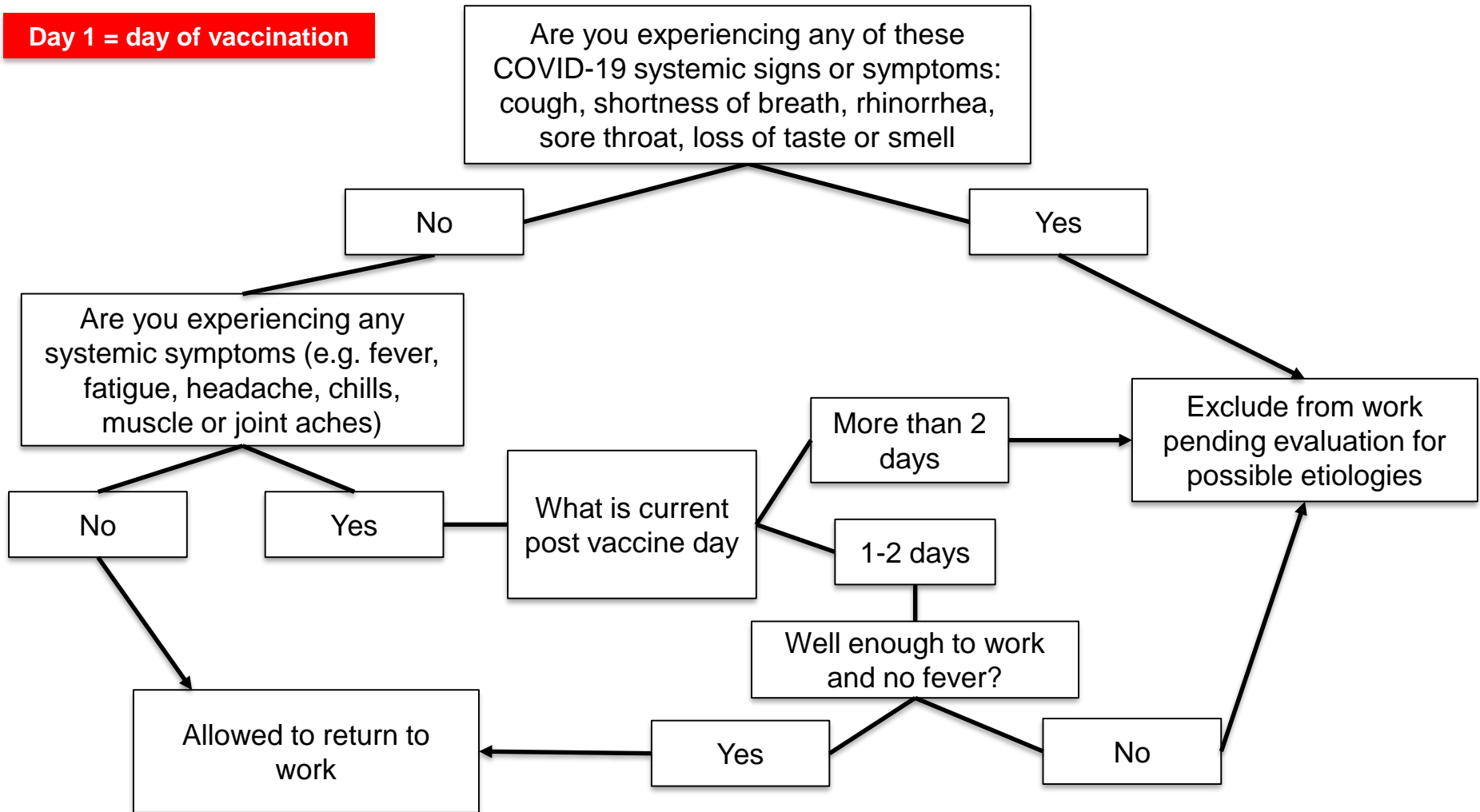
Hawai'i Pacific Health Medical

**HAWAI'I  
PACIFIC  
HEALTH**

HAWAI'I  
HEALTH  
PARTNERS

# Returning to Work Post-Vaccination

**Day 1 = day of vaccination**



# Q&A

Next Week:

# The 3<sup>rd</sup> Annual HHP Webinar

**Thursday, January 21, 2021**

**12:00 – 1:00 pm | Zoom**

## How to Attend:

- No registration required
- Monday, 01/18 - Zoom link will be emailed via [Info@hawaiihealthpartners.org](mailto:Info@hawaiihealthpartners.org)

# Thank you!

- A recording of the meeting will be available afterwards.
- Unanswered question?
  - Contact us at [Covid19Bulletin@hawaiiipacifichealth.org](mailto:Covid19Bulletin@hawaiiipacifichealth.org)